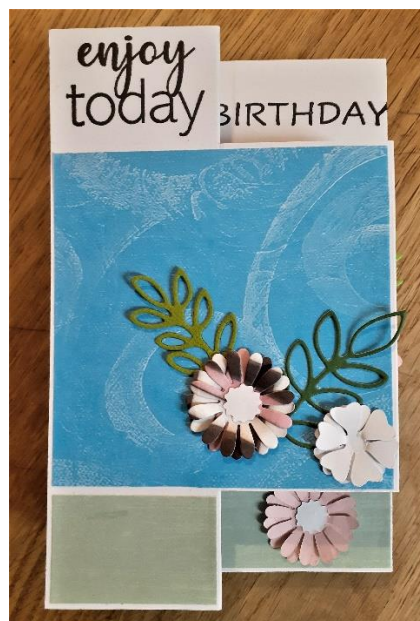




Pop Up Fun Fold



SUPPLIES

QTY	PRODUCT	MEASUREMENT	DESCRIPTION
1	Card Stock	27cm x 15cm	White or another light colour is best for the techniques we are using
3	Patterned Paper	8.5cm x 8.5cm	Any design and any colour that you like. I used blue with white swirls as it looked like clouds to me.
4	Patterned Paper	4cm x 2.5cm	Any design or colour to go with the other patterned paper that you have chosen. I chose a pale green with a light brush of white – it kind of reminded me of grass.
1	Patterned Paper	8.5cm x 2.5cm	Same as the previous paper.
4-5	Acetate strips	Approx. ½ cm wide	The width doesn't have to be perfect – any random strips that you have will work. The length doesn't matter as you will cut them to the right length to suit your needs.
	Flowers / ephemera	The largest I used is approx.. 3cm in diameter	I used flowers – I die cut several and layered them up to give more dimension and I added some greenery as well. You could use any ephemera for this – balloons, tools, animals – really anything to suit the recipient.

CONSUMABLES

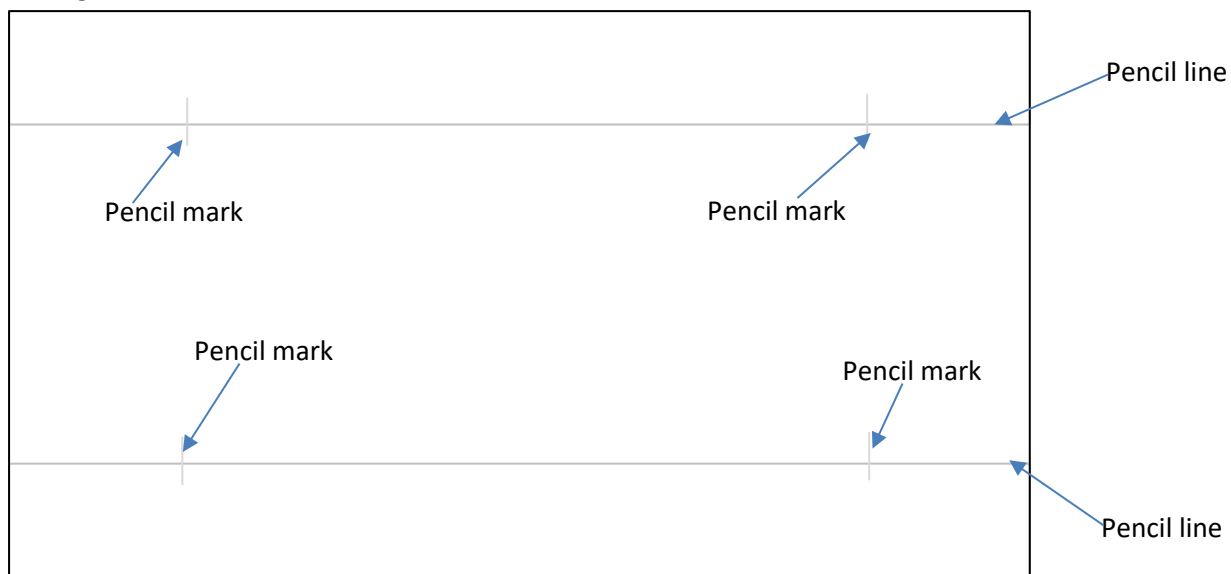
Double sided tape
Foam tape or craft foam
Glue
Ink – Any colour you like – I used Versafine
Onyx Black
Pencil
Eraser

TOOLS

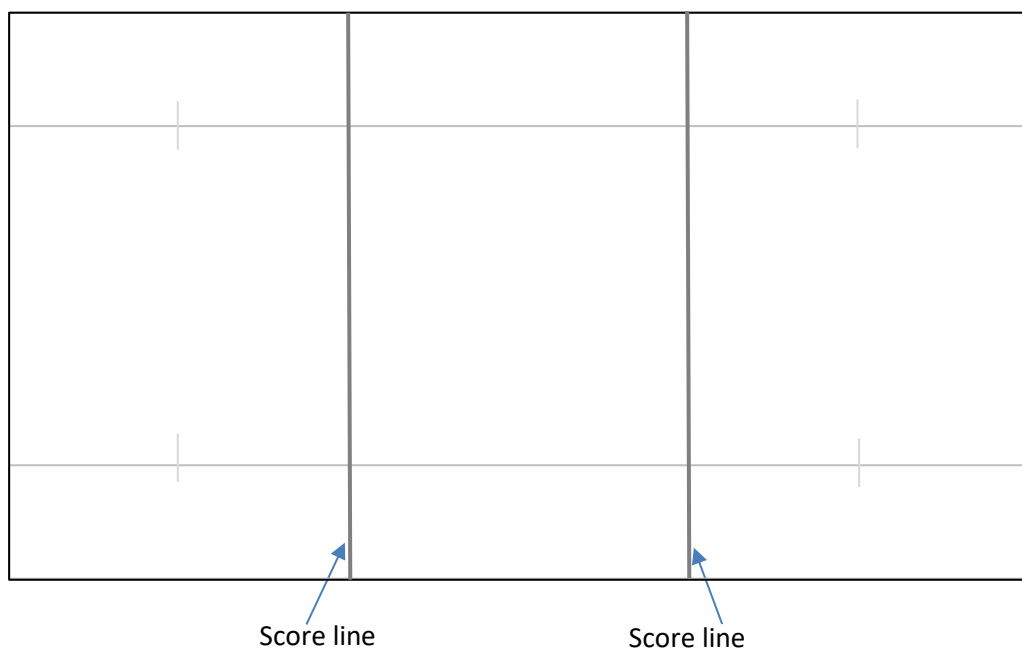
Scissors
Bone folder
Ruler
Greeting stamps
Perspex block for stamping
Scoreboard (or use your ruler and a bone folder)

METHOD FOR CARD BASE

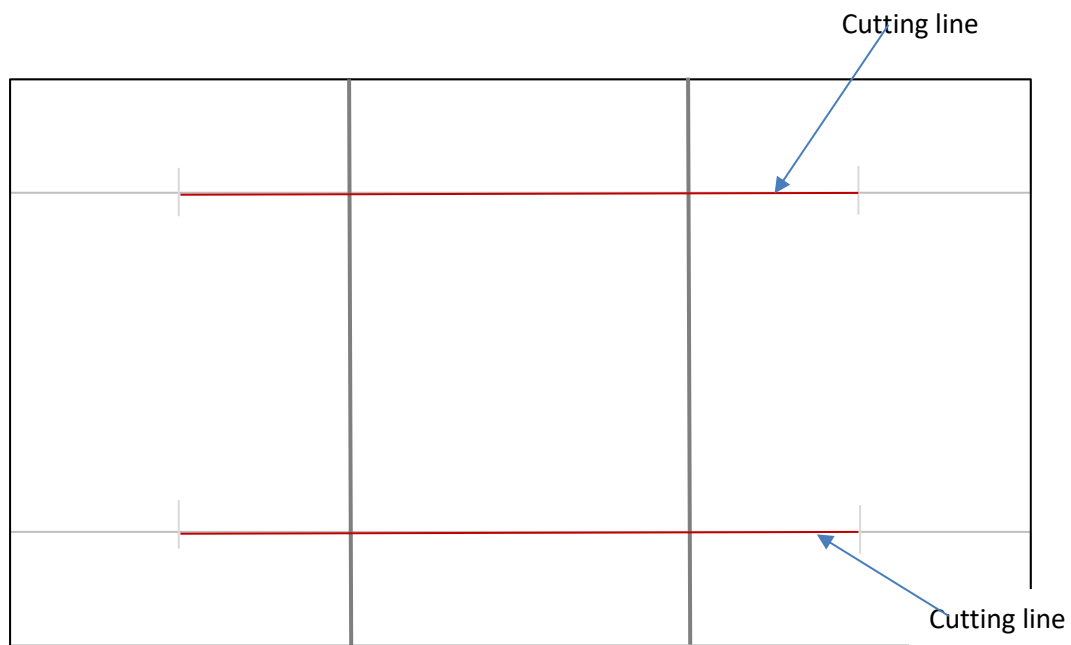
1. With the cardstock in landscape position, draw a line in pencil 3cm from the top edge and 3cm from the bottom edge.



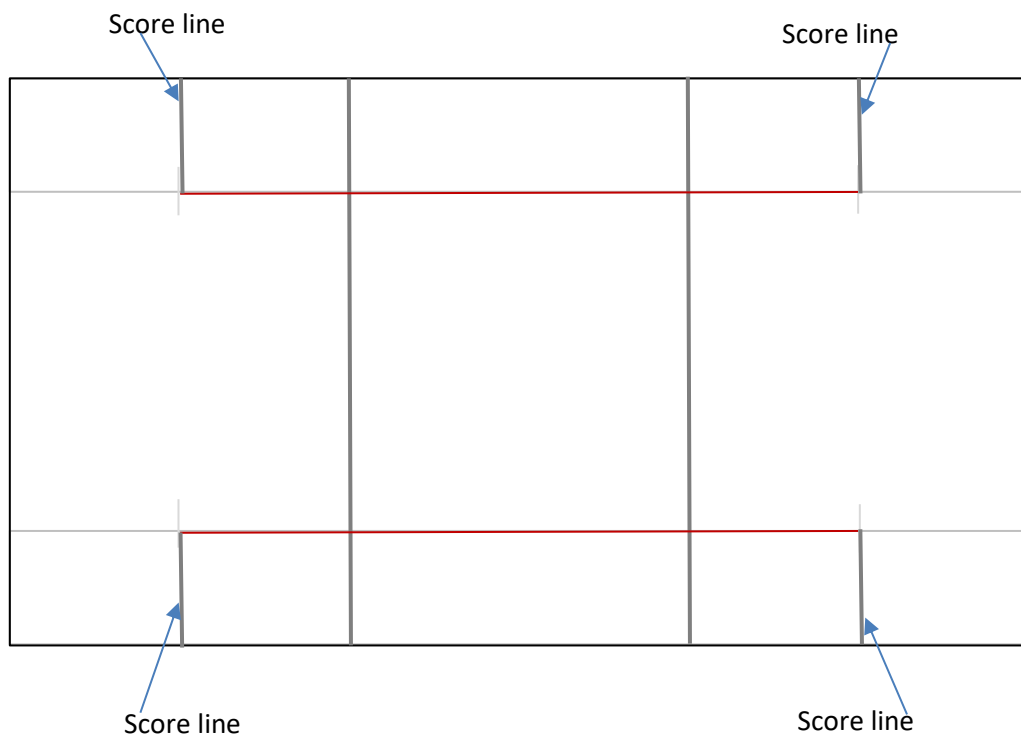
2. With the cardstock in landscape position, make a small mark on each line at 4.5cm from the left and right edges.
3. With the cardstock in landscape position, score at 9cm and 18cm – so 9cm from each edge.



4. Using a metal ruler and cutting blade, cut on the 3cm line between the two marks that we made at the 4.5cm from each edge.



5. With the cardstock in landscape position, score from the 4.5cm mark to the edge of the card – both top and bottom.



6. Erase all pencil marks.
7. Fold the score lines in the following order going from left to right in the landscape position:
 - a. The small top and bottom score at the 4.5cm mark - a mountain fold
 - b. The score line at the 9cm mark - the top and bottom score lines a valley fold and the centre piece a mountain fold
 - c. The score line at the 18cm mark – the top and bottom score lines a mountain fold and the centre a valley fold.
 - d. The small top and bottom score lines at 22.5cm – valley folds.

NOTE: *in the list of supplies, I have included the items that I used to decorate my card however, you can decorate it any way you like. Have fun!*